

# VIRTUALIZING SAP HANA IN PRODUCTION

TECHNOLOGY BRIEF



Red Hat was the only vendor positioned in the Visionaries quadrant in the 2016 Gartner Magic Quadrant for x86 Server Virtualization Infrastructure.<sup>1</sup>

## INTRODUCTION

Virtualization offers companies many benefits, including deployment flexibility, workload and resource management, and scalability. Increasingly, companies are turning to virtualization to run critical enterprise applications.

Today, many companies run SAP® applications in a virtual environment, but recently businesses have started to virtualize SAP HANA®.

Since 2016, SAP has supported running SAP HANA on Red Hat® Virtualization in development and test environments. Now SAP has certified running SAP HANA on Red Hat Virtualization in production as well.

## RED HAT VIRTUALIZATION— READY FOR ENTERPRISE SAP HANA WORKLOADS

Red Hat Virtualization is a complete virtualization infrastructure solution for virtualized servers and workstations, with the flexibility to deploy on-premise or in the cloud. It offers robust, enterprise virtualization with low total cost of ownership (TCO) and no vendor dependency.

### OPEN SOURCE

Red Hat Virtualization is open source software, built on a Kernel-based Virtual Machine (KVM) and oVirt, the open source virtualization management system.

### WORKLOAD SUPPORT

Red Hat Virtualization supports your workloads today and tomorrow. It is fully certified to work with all Red Hat products, including Red Hat CloudForms for unified management and operations in a hybrid environment, Red Hat OpenStack Platform for building and managing private or public clouds, Red Hat Ansible Automation to automate IT, and Red Hat OpenShift Container Platform, the enterprise distribution of Kubernetes, the industry-leading open source container orchestration framework.<sup>2</sup>

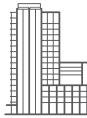
### PERFORMANCE

Red Hat Virtualization offers high performance. It holds top virtualization benchmarks for performance and scalability for Linux® workloads—so you can be confident that it will power critical SAP HANA workloads.<sup>3</sup>

<sup>1</sup> [Red Hat press release, August 2016.](#)

<sup>2</sup> [SAP Vora 2.0 runs on Kubernetes clusters using Red Hat OpenShift Container Platform.](#)

<sup>3</sup> [First SPECvirt\\_sc2013 result using Red Hat Virtualization \(RHV\), 2017.](#)



#### ABOUT RED HAT

Red Hat is the world's leading provider of open source software solutions, using a community-powered approach to provide reliable and high-performing cloud, Linux, middleware, storage, and virtualization technologies. Red Hat also offers award-winning support, training, and consulting services. As a connective hub in a global network of enterprises, partners, and open source communities, Red Hat helps create relevant, innovative technologies that liberate resources for growth and prepare customers for the future of IT.

TABLE 1. RED HAT VIRTUALIZATION 4 OPERATING CHARACTERISTICS.

	RED HAT VIRTUALIZATION 4
Host per cluster	250
Logical CPU per host	480
Processors per VM	240
RAM per VM	6TB

#### CONCLUSION

Now customers have a choice when virtualizing SAP HANA. Red Hat Virtualization offers a cost-effective, robust, enterprise-grade approach to virtualization across your SAP landscape.

Learn more about SAP HANA at <https://www.sap.com/products/hana.html>.

Learn more about Red Hat Virtualization at <https://www.redhat.com/en/technologies/virtualization>.

Learn more about the innovative partnership of Red Hat and SAP at [redhat.com/sap](https://redhat.com/sap).

NORTH AMERICA  
1 888 REDHAT1

EUROPE, MIDDLE EAST,  
AND AFRICA  
00800 7334 2835  
[europe@redhat.com](mailto:europe@redhat.com)

ASIA PACIFIC  
+65 6490 4200  
[apac@redhat.com](mailto:apac@redhat.com)

LATIN AMERICA  
+54 11 4329 7300  
[info-latam@redhat.com](mailto:info-latam@redhat.com)



[facebook.com/redhatinc](https://facebook.com/redhatinc)  
[@redhatnews](https://twitter.com/redhatnews)  
[linkedin.com/company/red-hat](https://linkedin.com/company/red-hat)

Copyright © 2017 Red Hat, Inc. Red Hat, Red Hat Enterprise Linux, the Shadowman logo, and JBoss are trademarks of Red Hat, Inc., registered in the U.S. and other countries. Linux® is the registered trademark of Linus Torvalds in the U.S. and other countries.